

Engine	Weichai WD10G178E25
Gross Power	176 hp @ 1,850 rpm
Net Power	163 hp @ 1,850 rpm
Maximum Torque	830 N·m
Blade Capacity	4.5 m ³
Operating Weight	17,000 kg

B160C

BULLDOZER



TOUGH WORLD. TOUGH EQUIPMENT.

B160C SPECIFICATIONS >>>

ENGINE

Make	Weichai
Model	WD10G178E25
Gross Power	131 kW (176 hp) @ 1,850 rpm
Net Power	120 kW (163 hp) @ 1,850 rpm
Peak Torque	830 N·m @ 1200 rpm
Number of Cylinders	6
Aspiration	Turbocharged
Displacement	9.726 L

TRANSMISSION

Transmission Type	Power shift
Maximum Travel Speed, fwd	10.6 km/h
Maximum Travel Speed, rev	13.6 km/h
Number of Speeds, fwd	3
Number of Speeds, rev	3

ELECTRICAL SYSTEM

System Voltage	24 V
----------------	------

UNDERCARRIAGE

Shoe Width	510 mm
Number of Shoes per Side	37
Number of Upper Rollers per Side	2
Number of Bottom Rollers per Side	6
Shoe Ground Pressure	67 kPa
Track on Ground	2,430 mm

DIMENSIONS

Overall Length	6,510 mm
Height to Top of Cab	3,200 mm
Ground Clearance	400 mm

OPERATING WEIGHTS

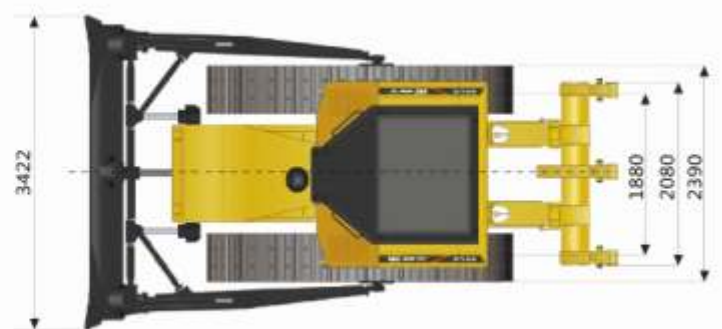
Operating Weight	17,000 kg
------------------	-----------

BLADE PERFORMANCE

Blade Type (referenced)	Straight
Blade Capacity (referenced)	4.5 m ³
Blade Width	3,422 mm
Blade Height	1,150 mm
Depth below Ground	540 mm
Lift above Ground	1,100 mm
Blade Tilt (left)	445 mm
Blade Tilt (right)	470 mm
Cutting Angle	55°

SERVICE CAPACITIES

Fuel Tank	350 L
Engine Oil	24 L
Cooling System	40.5 L
Hydraulic System Total	108 L
Transmission and Torque Converter	122 L
Final Drives, each	66 L



Unit: mm